





Underflow Magnet

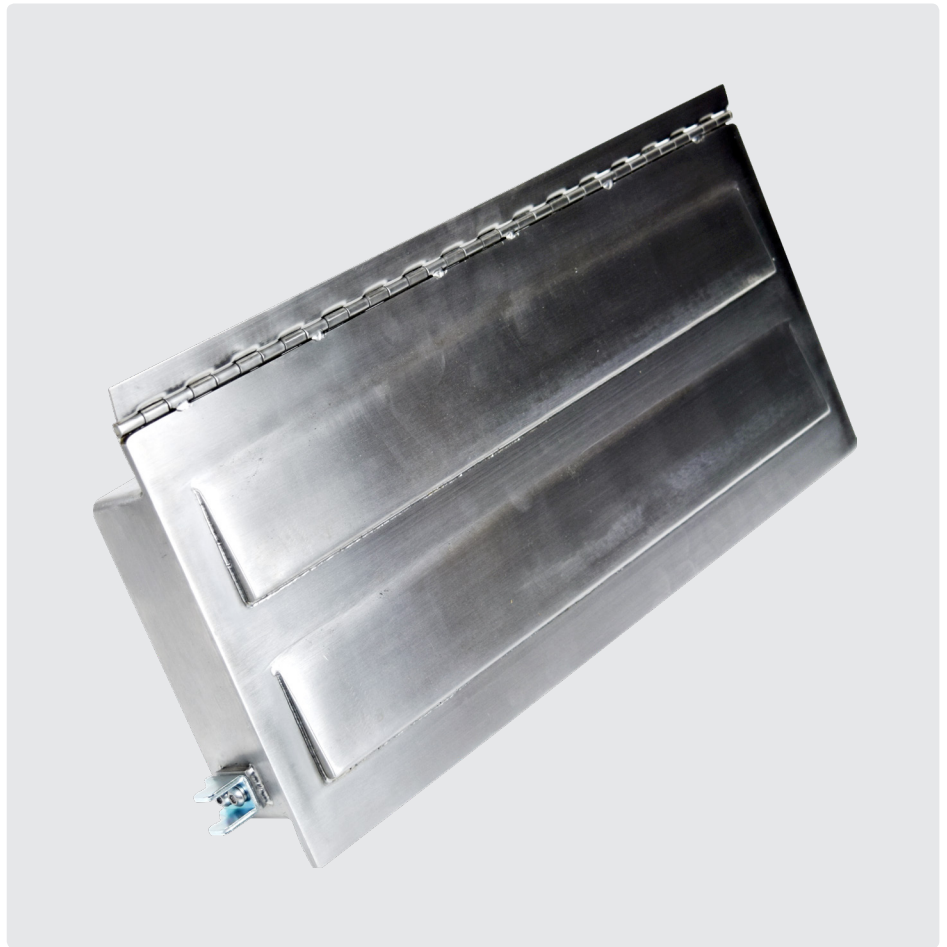
At A Glance

-  **Protection: Primary**
-  **Feed Type: Inclined Chute**
-  **Material Type: NdFeb**
-  **Cleaning Type: Manual**

Our high intensity underflow magnet has been designed to operate in arduous conditions and where contamination size is relatively large e.g. nuts, bolts etc. The unit incorporates two magnetic poles which generate high intensity magnetic fields.

The unit is secured to the chute by a hinge and toggle clamp arrangement. The toggle clamps ensure even pressure is generated around the seal to prevent any product leakage.

The underflow magnet can be incorporated into any form of angled pipe or chute section. A common installation location is raw material inlet points for products such as grain, rice, corn, bran and animal feed etc. Two catchment areas ensure that attracted contamination cannot be 'washed off'.



Benefits

- Easy to clean
- Reduces 'spark' risk
- Meets audit requirements
- High collection capacity
- Maintains full flow
- Removes 'tramp' sized contaminants
- Rare Earth deep magnetic field

Performance

Magnetic Performance	3,500 Gauss
Performance Reading	On magnetic front face
Magnet Grade	N35 – Inspected and confirmed via hystero-graph prior to use
Temperature	-20°C / +90°C
Depth of field	90mm

Suitability

Suitable Products	Dry and semi dry powders, granulates and lumps etc
Suitable Location	All angled chute sections

Materials

Magnetic Material	Rare Earth Neodymium Iron Boron - (NdFeb)
Housing	316 grade stainless steel
Other Parts	316 grade stainless steel
Hinge	304 grade stainless steel
Toggle Clamps	Zinc plated mild steel
Surface Finish	Brushed to 2.4µm

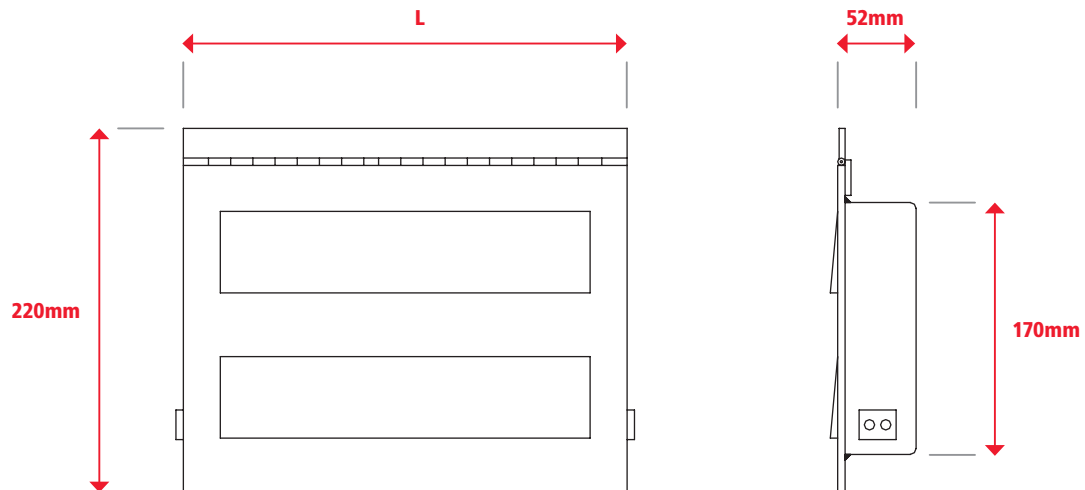
Cleaning

Underflow magnets are very easy to clean. Simply release the two securing toggle clamps and allow the magnet to swing away under its own weight, this will give access to the magnetic face. All attracted contamination can now be removed by a gloved hand or scraper tool.

Options

- Pharmaceutical specification
- Ceramic magnetic material
- Higher temperature versions available
- Higher gauss versions available
- Sizes up to 800mm long
- 304 grade stainless steel

Underflow Magnet



Part Number	L (mm)	Weight (kg)
UFM200	200	10
UFM250	250	13
UFM300	300	15
UFM350	350	17
UFM400	400	20
UFM450	450	23
UFM500	500	27

For non-standard sizes, please contact sales@eclipsemagnetics.com